

## SpeedBox 3.0 B.Tuning for Bosch (incl. Gen4)

### STEP 1: Preparation for installation:

**A.** Prepare the following tools:

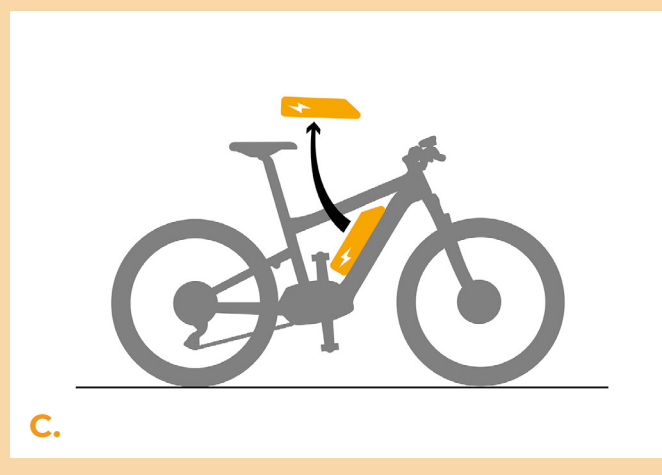
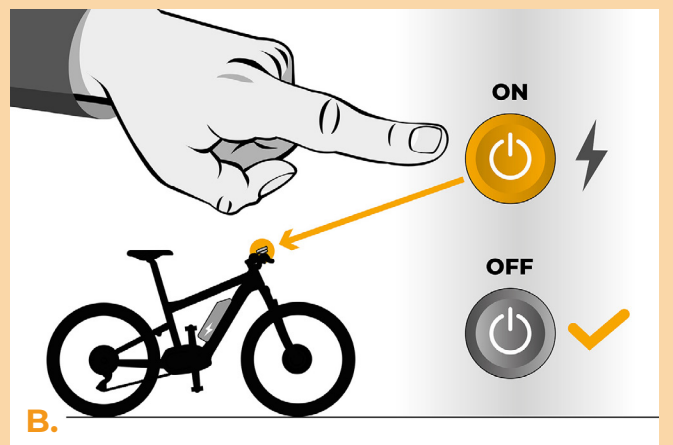
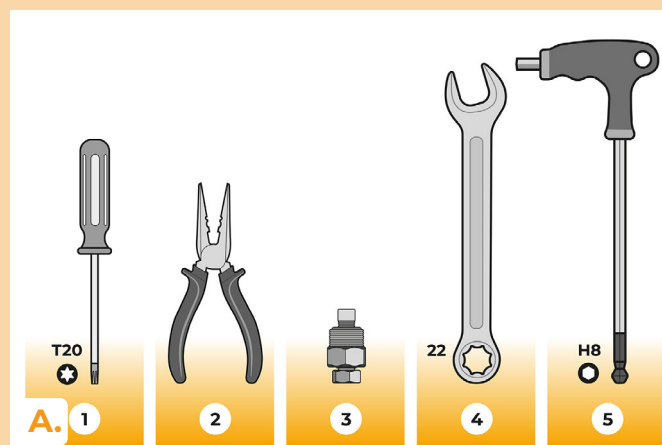
1. T20 Torx screwdriver
2. Needle nose pliers

*If crank removal is necessary, you will need:*

3. Crank puller
4. Wrench 22 mm
5. Hex Key H8

**B.** Turn off the e-bike.

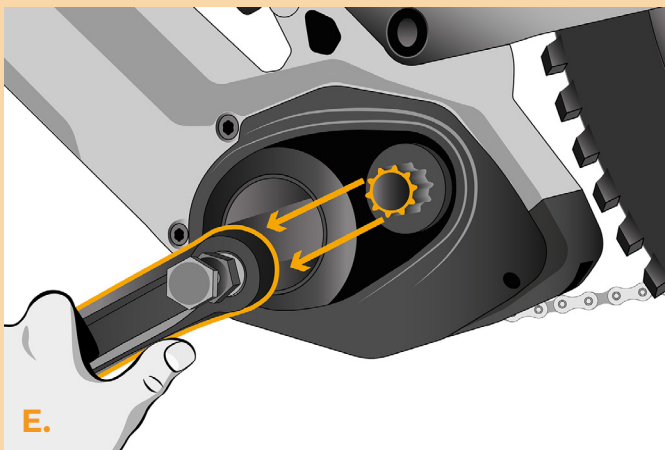
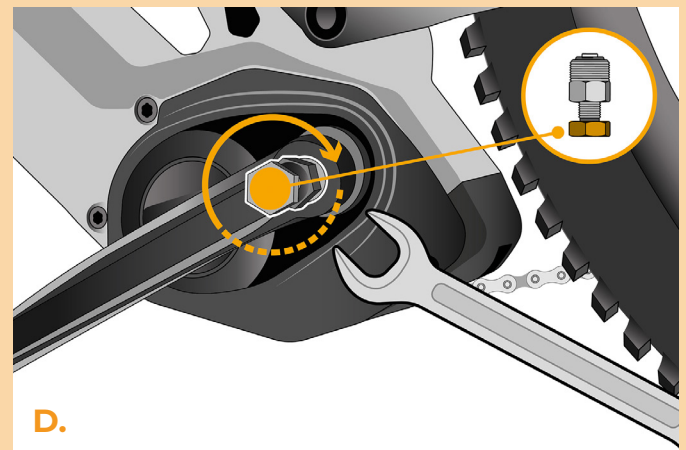
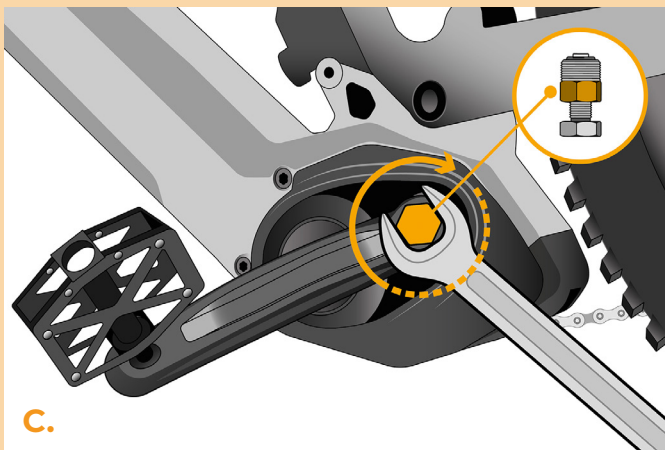
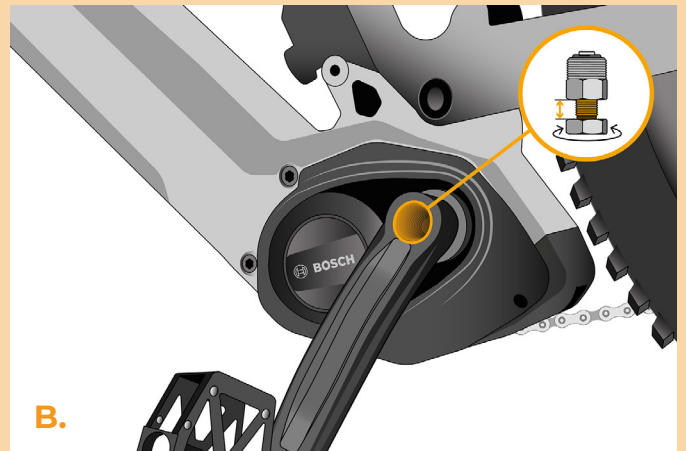
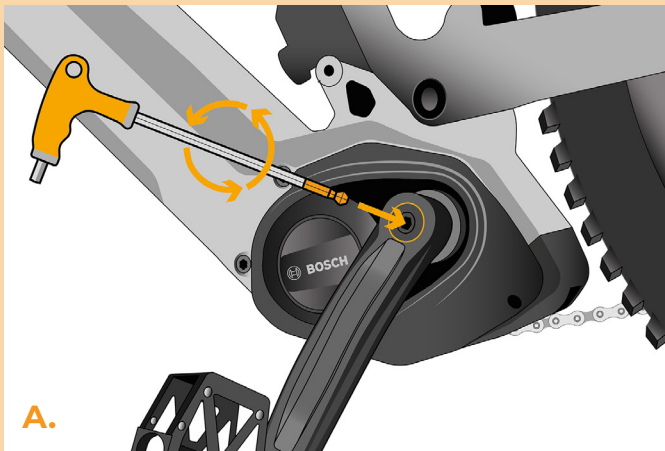
**C.** Remove the battery from the e-bike according to the manufacturer's manual.



## STEP 2: Crank removal

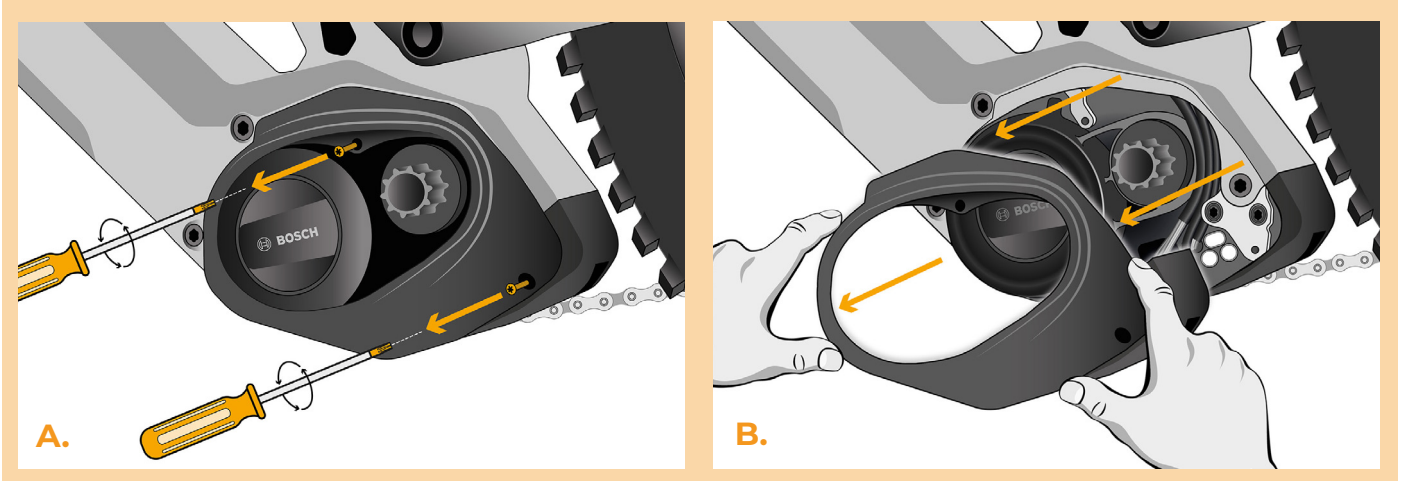
*If the crank interferes with the removal of the plastic engine cover, it must be dismantled.*

- A.** Remove the crank bolt of the left crank arm using the hex key H8.
- B.** Before screwing the crank puller into the crank arm, unscrew the crank puller's "nut" as far as possible from the "bolt".
- C.** Screw the crank puller into the crank arm and tighten it with the 22 mm wrench.
- D.** Continue fastening the crank pullers "bolt" with the 22 mm wrench until the crank arm pulls free of the central axis.
- E.** Remove the crank arm from the central axis of the motor.



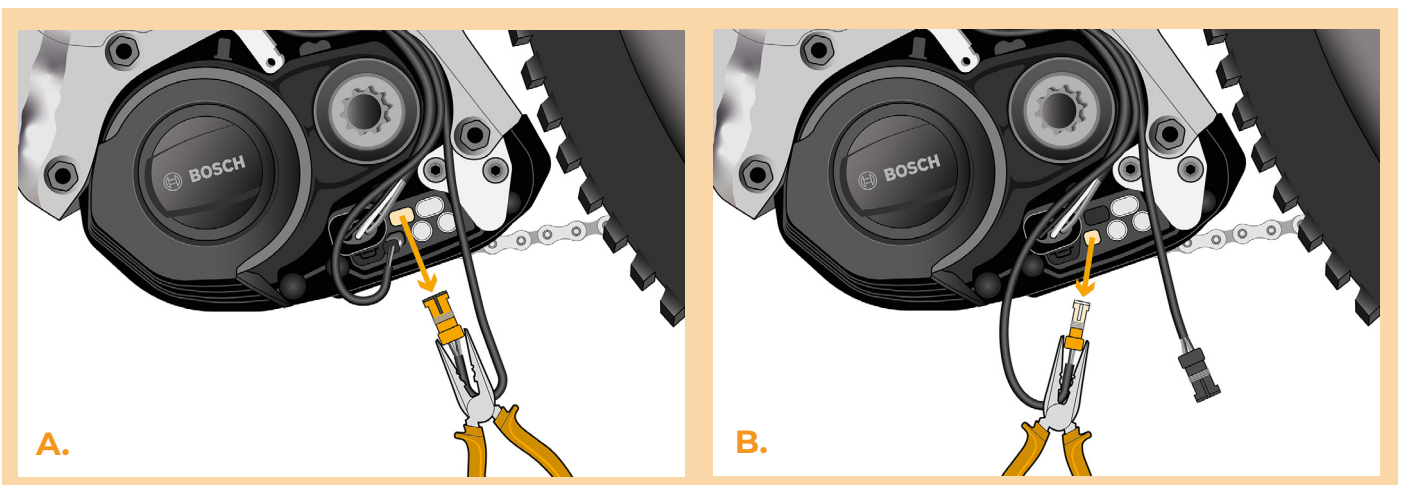
## STEP 3: Motor cover removal

- A.** Unscrew the 2 screws holding the motor cover with the T20 Torx screwdriver.
- B.** Remove the motor cover.



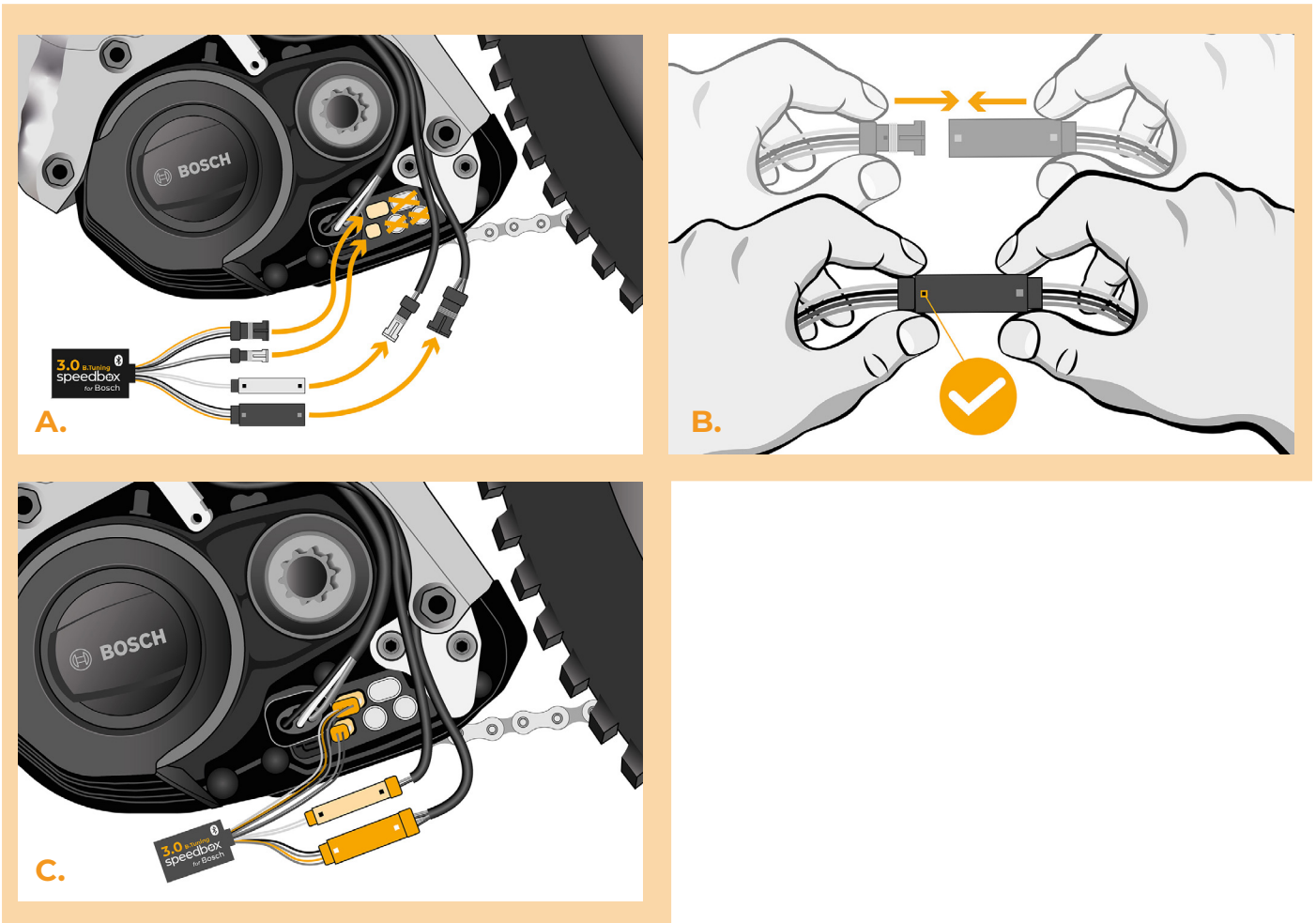
## STEP 4: Disconnecting the connectors from the motor

- A.** Using pliers, disconnect the display connector from the motor.
- B.** Disconnect the speed sensor connector in the same manner.



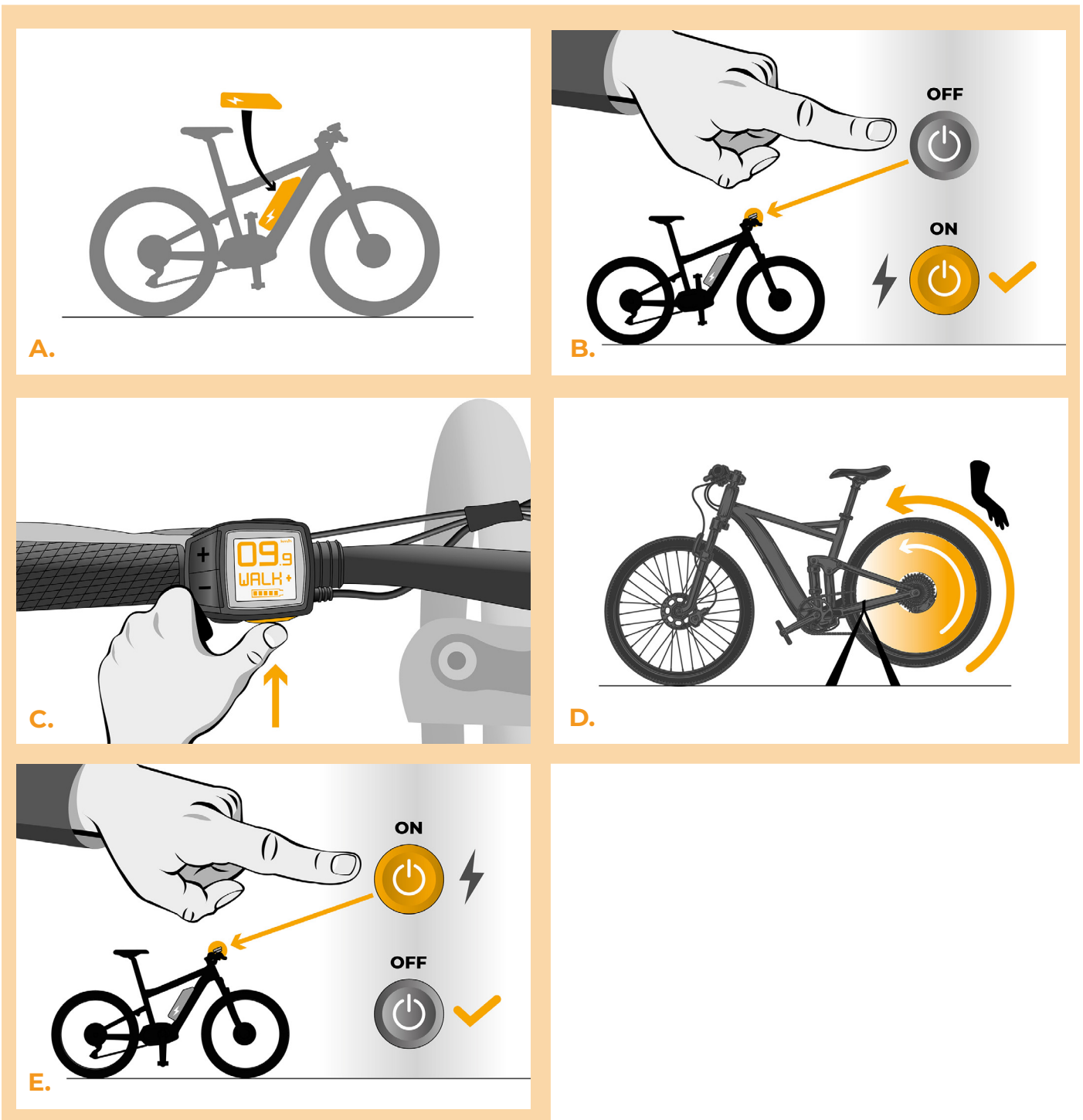
## STEP 5: SpeedBox tuning installation

- A.** Replace the original connectors with the SpeedBox connectors.
- B.** Plug the e-bike connectors, disconnected from the motor (step 4), into the SpeedBox connectors and make sure that the locks on the connectors are seated properly.
- C.** Before assembling the motor, check the correct wiring as shown in the figure.



## STEP 6: Tuning function check

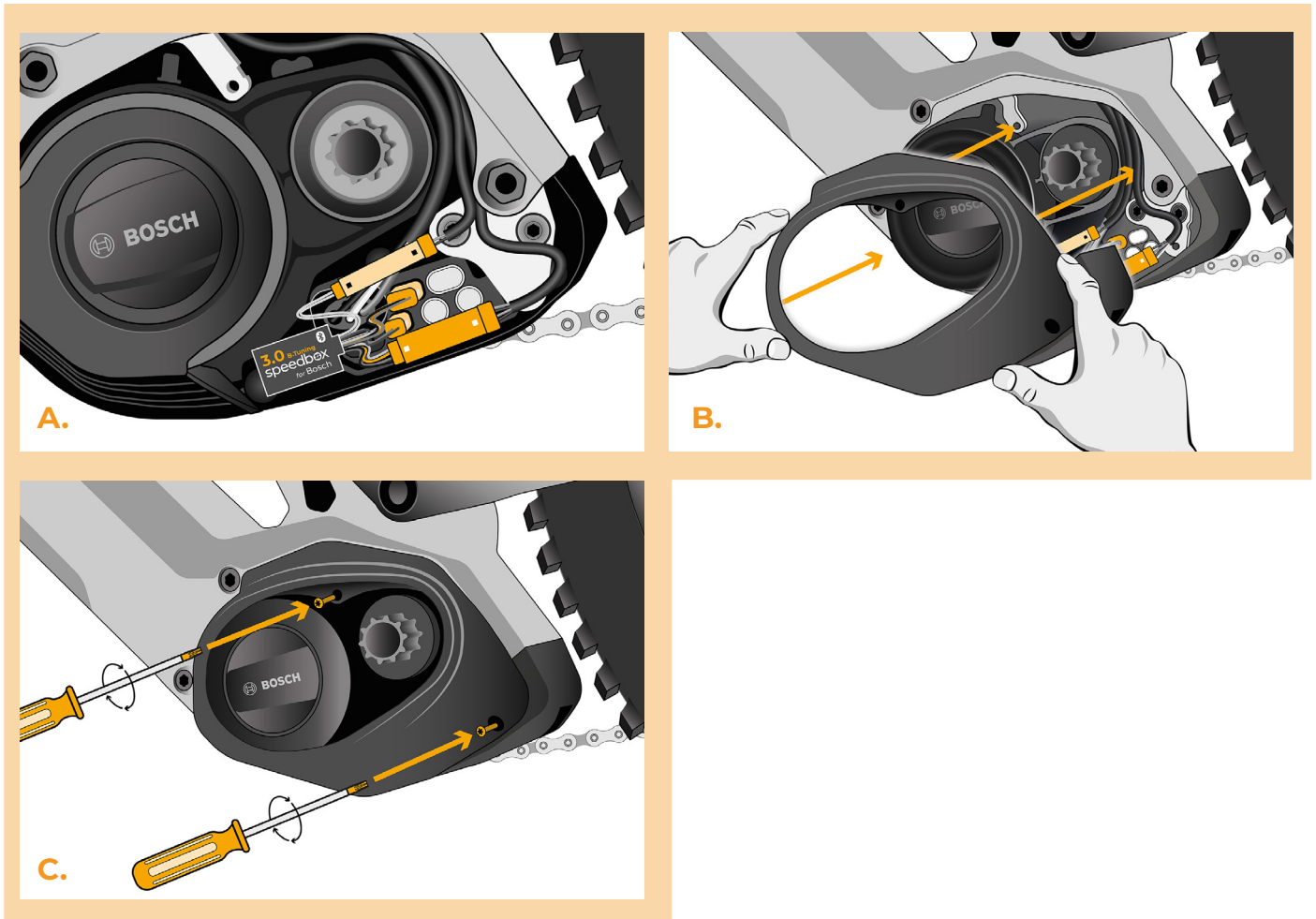
- A.** Place the battery back into the e-bike.
- B.** Turn the e-bike on.
- C.** Activate/deactivate tuning by brief activation of the WALK function or by switching between two assistance modes twice (+-+). The value of 9.9 or 2.5 indicating the maximum speed will be displayed.
- D.** Spin the rear wheel and make sure the rear wheel speed is shown on the e-bike display.
- E.** Turn the e-bike off.





## STEP 7: Motor cover assembly

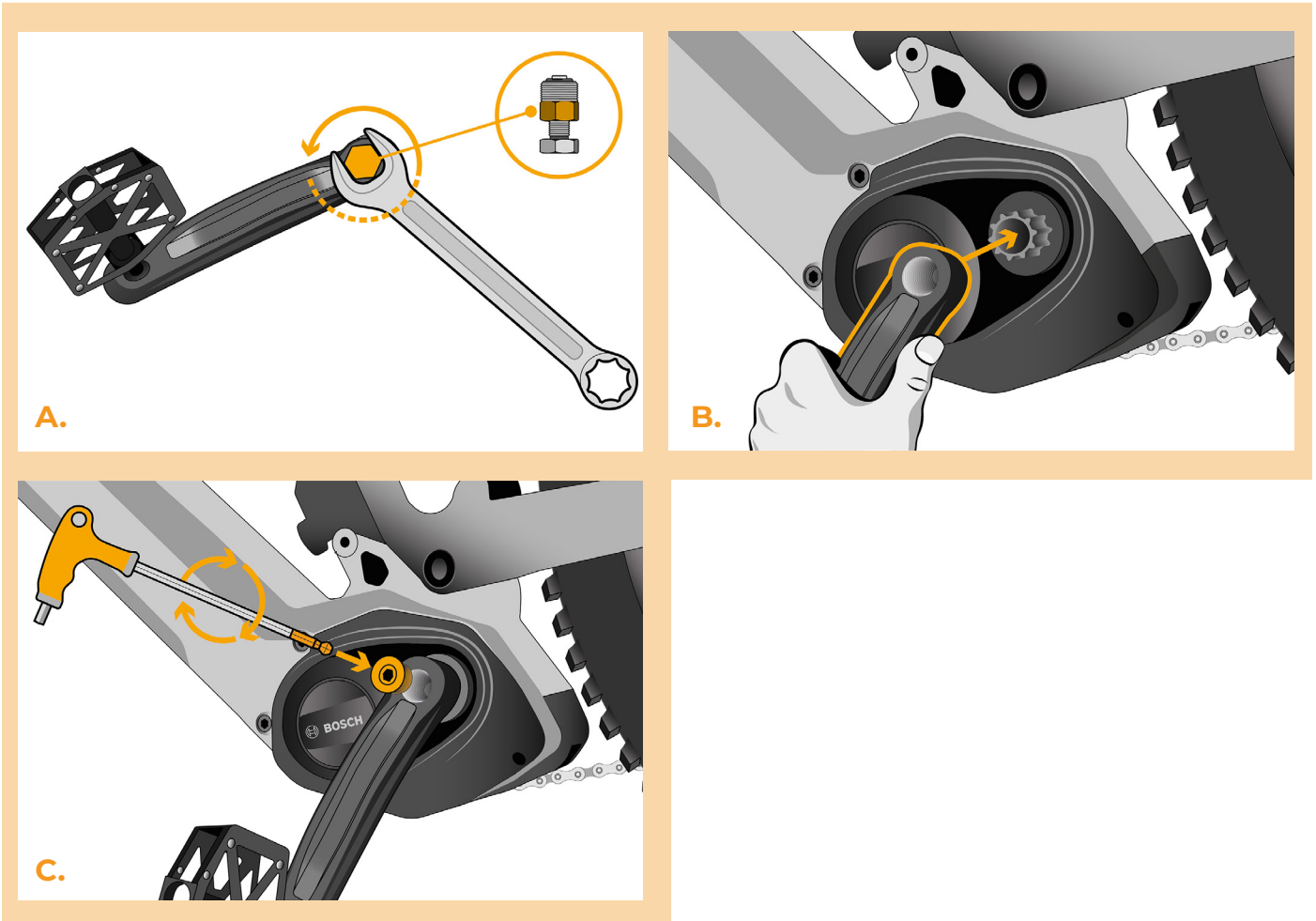
- A.** Fit the SpeedBox and all connectors and wires leading from the motor into the free space in the motor.
- B.** Place the motor cover back to its original position.
- C.** Attach the motor cover with two screws using a T20 Torx screwdriver.



## STEP 8: Crank assembly

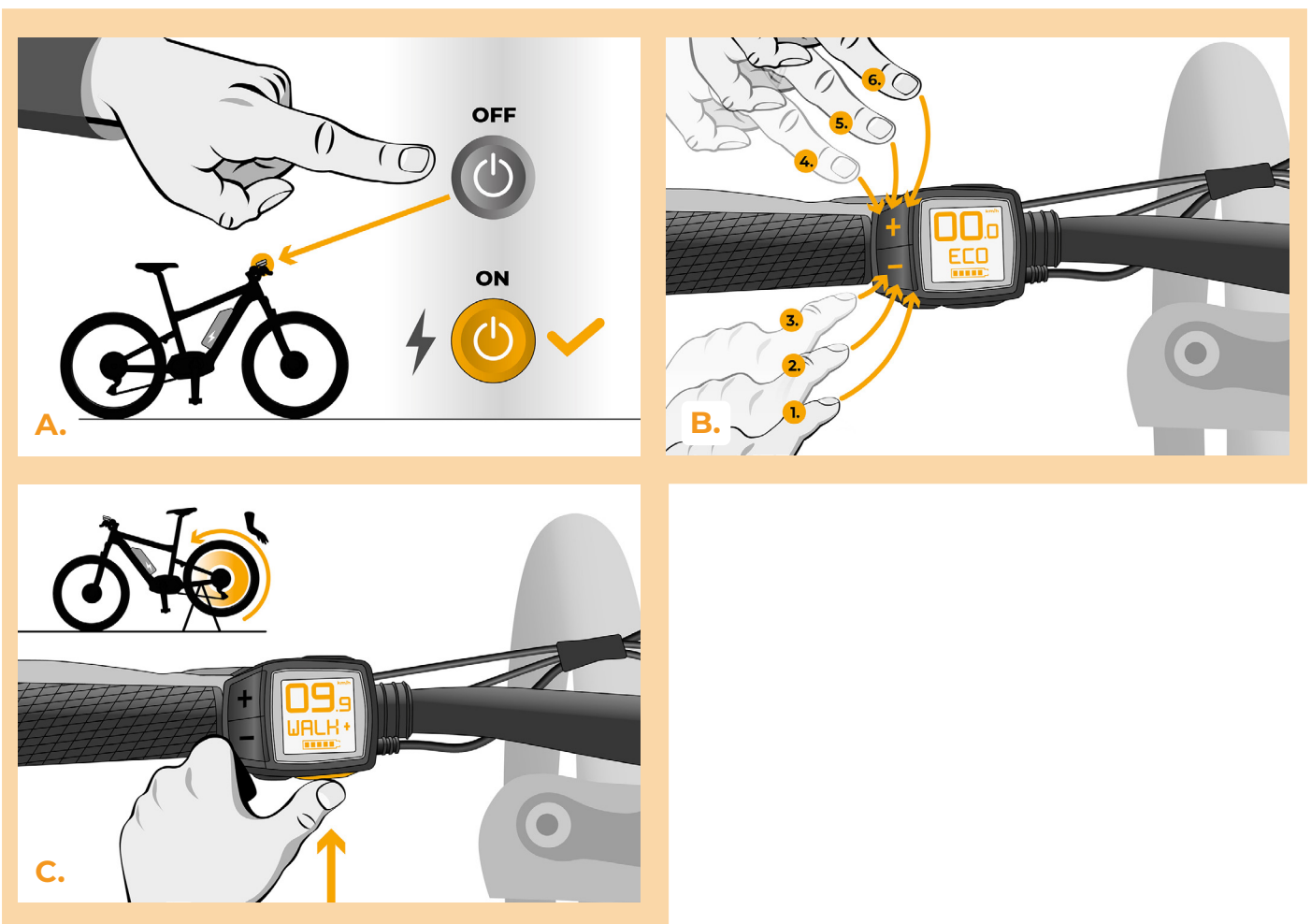
*If you have removed the crank according to Step 2, install it back.*

- A.** Using a 22 mm wrench, remove the crank puller from the crank arm.
- B.** Put the crank arm back to the central axis of the e-bike motor.
- C.** Screw the crank bolt into the crank arm and tighten it with the Hex Key H8.



## STEP 9: Setting the speed limit

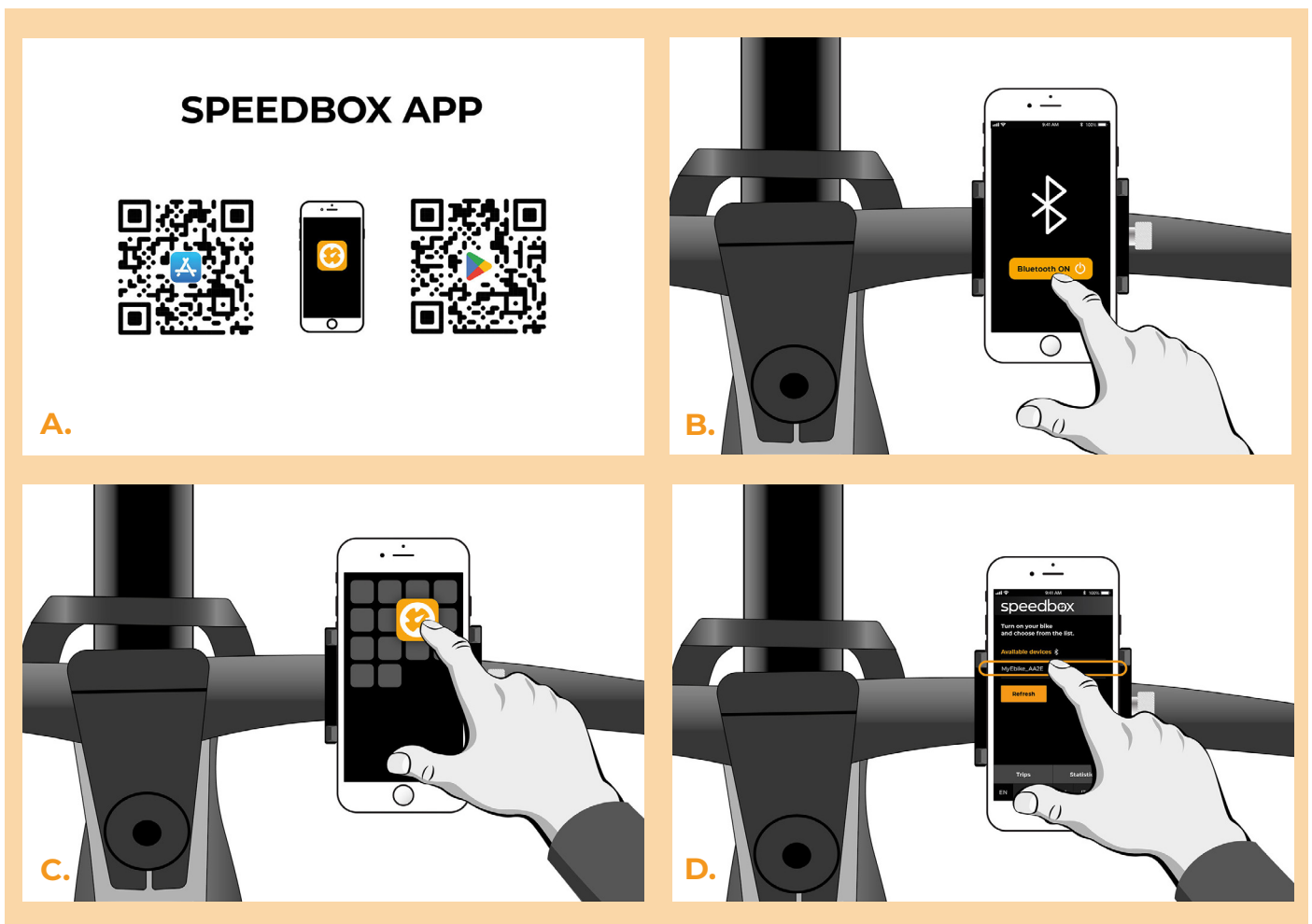
- A.** Turn the e-bike on.
- B.** Set TURBO mode. Switch between the assistance modes briefly in the following order TURBO -> SPORT -> TOUR -> ECO -> TOUR -> SPORT -> TURBO, i.e., go three levels down and three levels up. The current speed limit will be displayed.
- C.** Set the maximum speed limit by activating the WALK function briefly or by turning the rear wheel 360°. With each brief activation of the WALK function or turning of the wheel, the limit increases by 5 km/h. The last displayed limit is saved after five seconds of inactivity.

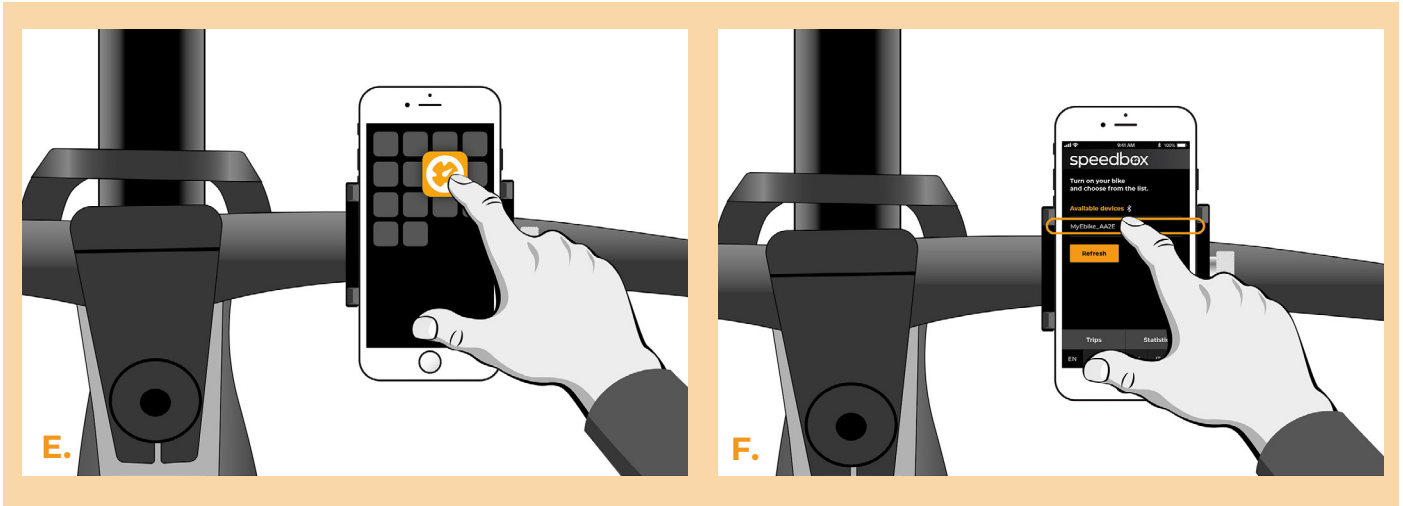




## STEP 10: Pairing SpeedBox with the SpeedBox App

- A.** Install the SpeedBox App from Google Play or App Store.
- B.** Turn on Bluetooth on your phone.
- C.** Open the SpeedBox App. Enable location services if prompted.
- D.** Select the device MyEbike\_xxxx. If you do not see it in the list, click on the “Refresh” button and, if necessary, make sure that:
  1. Your e-bike is switched on.
  2. You are not further than 5 m from your e-bike.
  3. You have Bluetooth turned on on your mobile phone.
  4. You have enabled location services for the SpeedBox App.
- E.** Choose and confirm your PIN and service password.
- F.** Now you can fully enjoy the SpeedBox App (control tuning, monitor riding data, and information about motor performance and energy consumption, you can set the speed limit, etc.).





[www.speedbox-tuning.com](http://www.speedbox-tuning.com)

Ebike Electronic s.r.o.

Rybna 716/24 | 110 00 Praha 1 | Czech Republic | ID: 05553555 | VAT: CZ05553555

