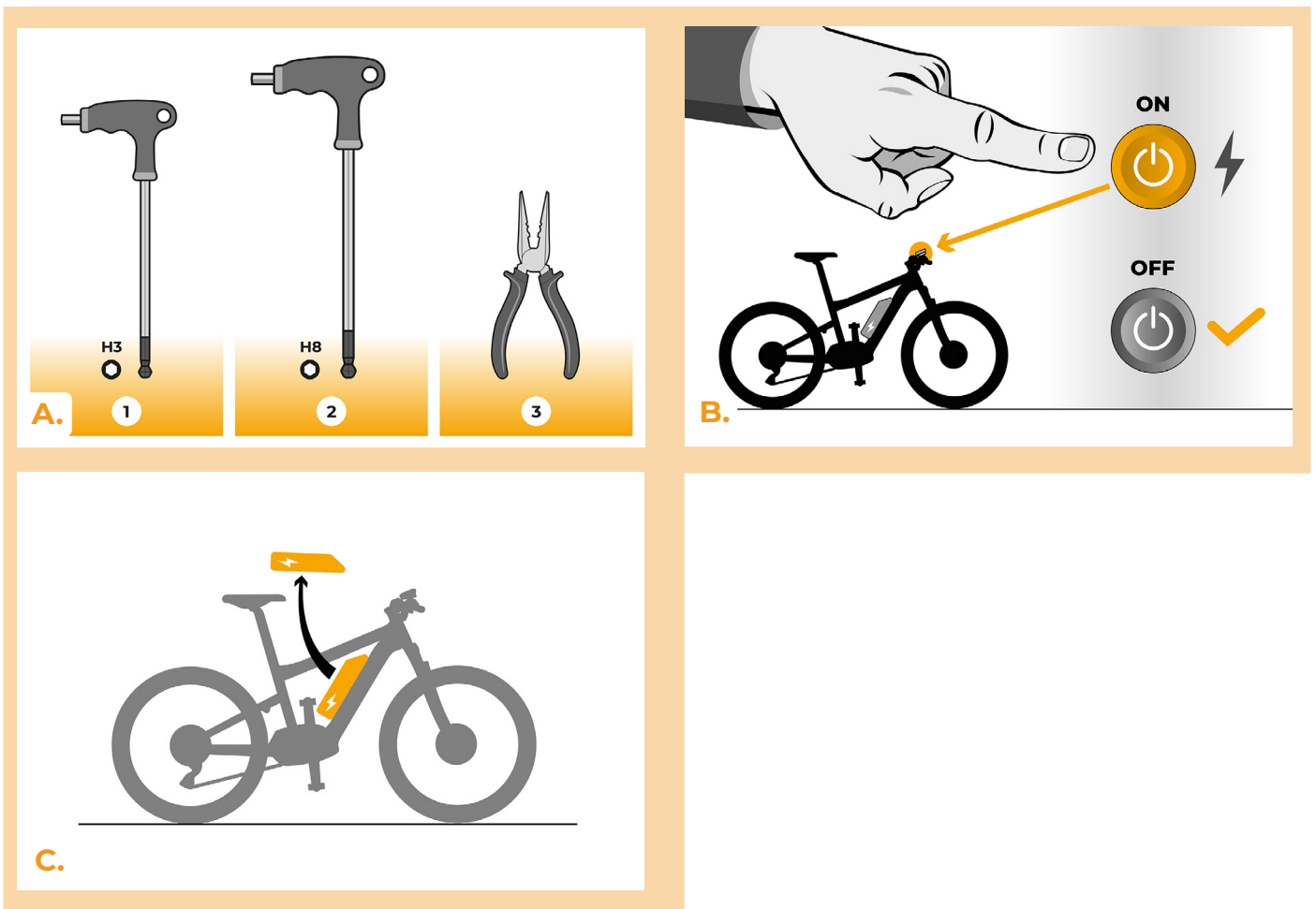


## SpeedBox 3.0 for Brose

### STEP 1: Preparation for installation

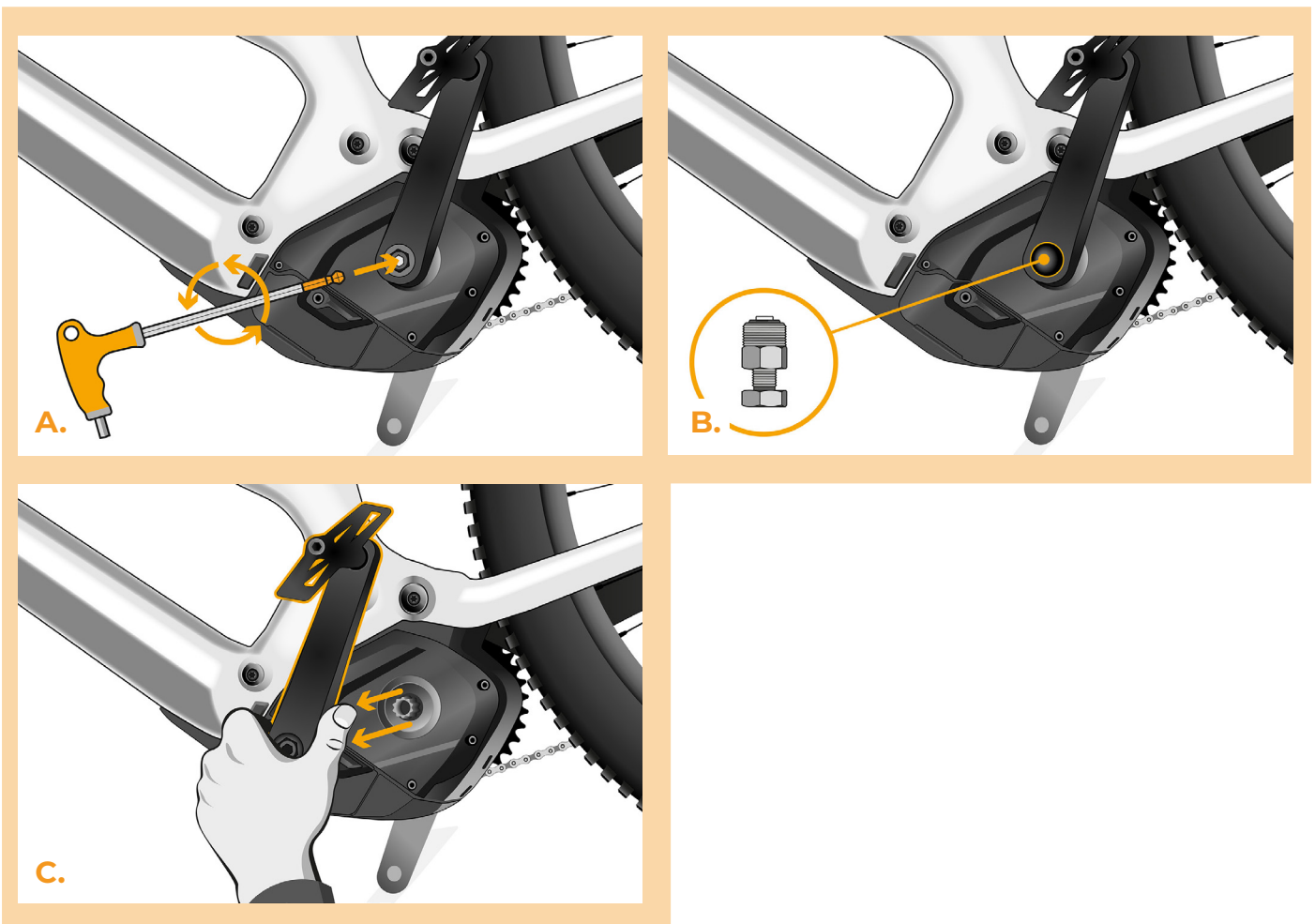
- A.** Prepare the following tools:
1. Hex Key H3
  2. Hex Key H8
  3. Needle nose pliers
- B.** Turn off the e-bike.
- C.** Remove the battery from the e-bike according to the manufacturer's manual.



## STEP 2: Crank removal

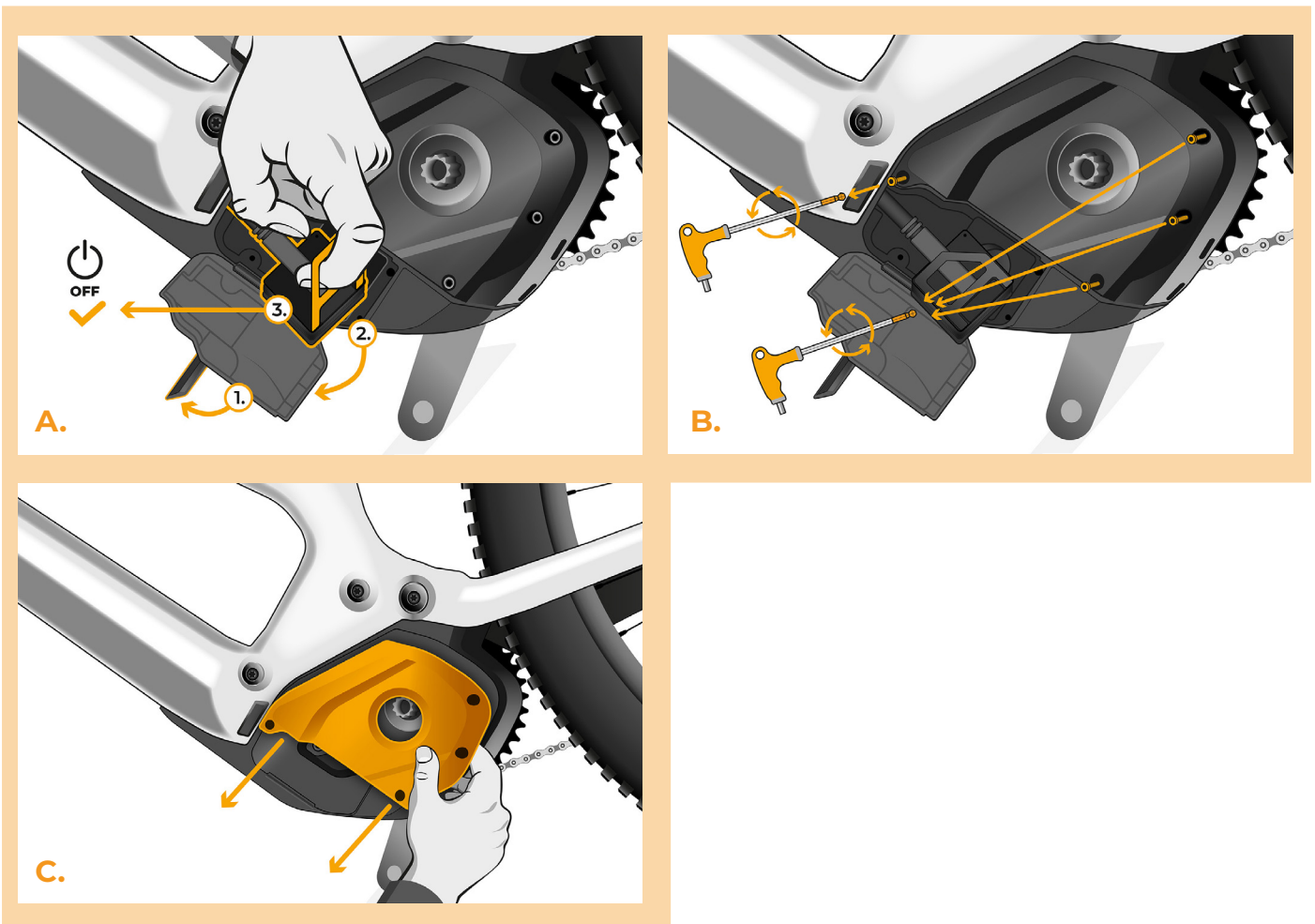
*If the crank interferes with the removal of the plastic motor cover, it must be dismantled.*

- A.** Remove the crank bolt of the left crank arm using the hex key H8.
- B.** In case the crank bolt is not self-extracting, it is necessary to use a crank puller, please see the User Manual on the website.
- C.** Remove the crank arm from the central axis of the motor.



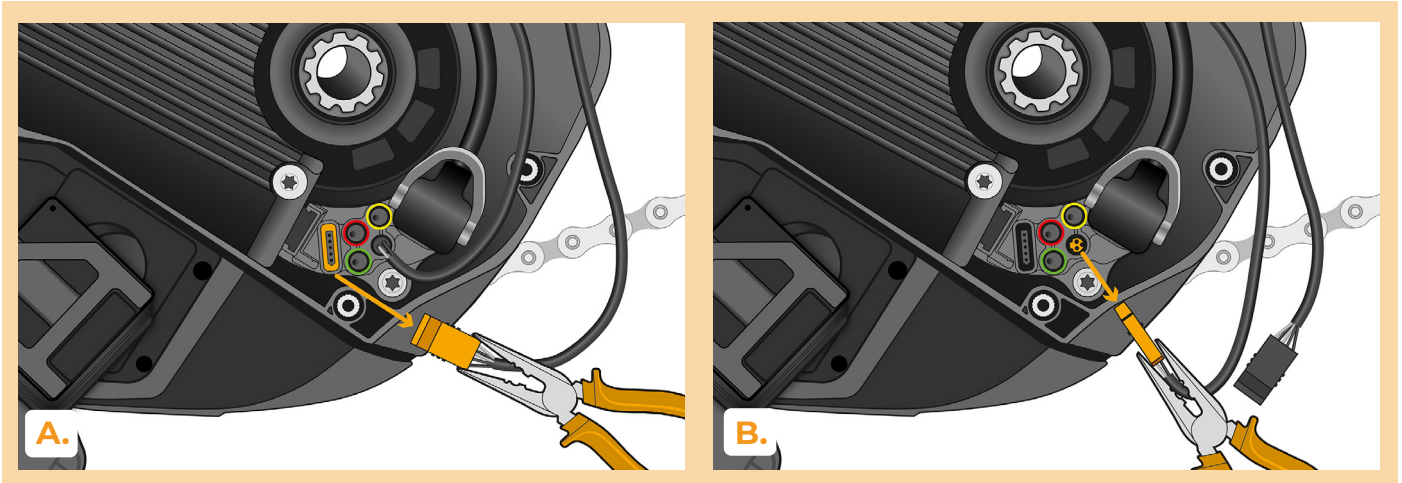
## STEP 3: Motor cover removal

- A.** Disconnect the battery charger connector.
- B.** Unscrew the five screws holding the motor cover with the hex key H3.
- C.** Remove the motor cover.



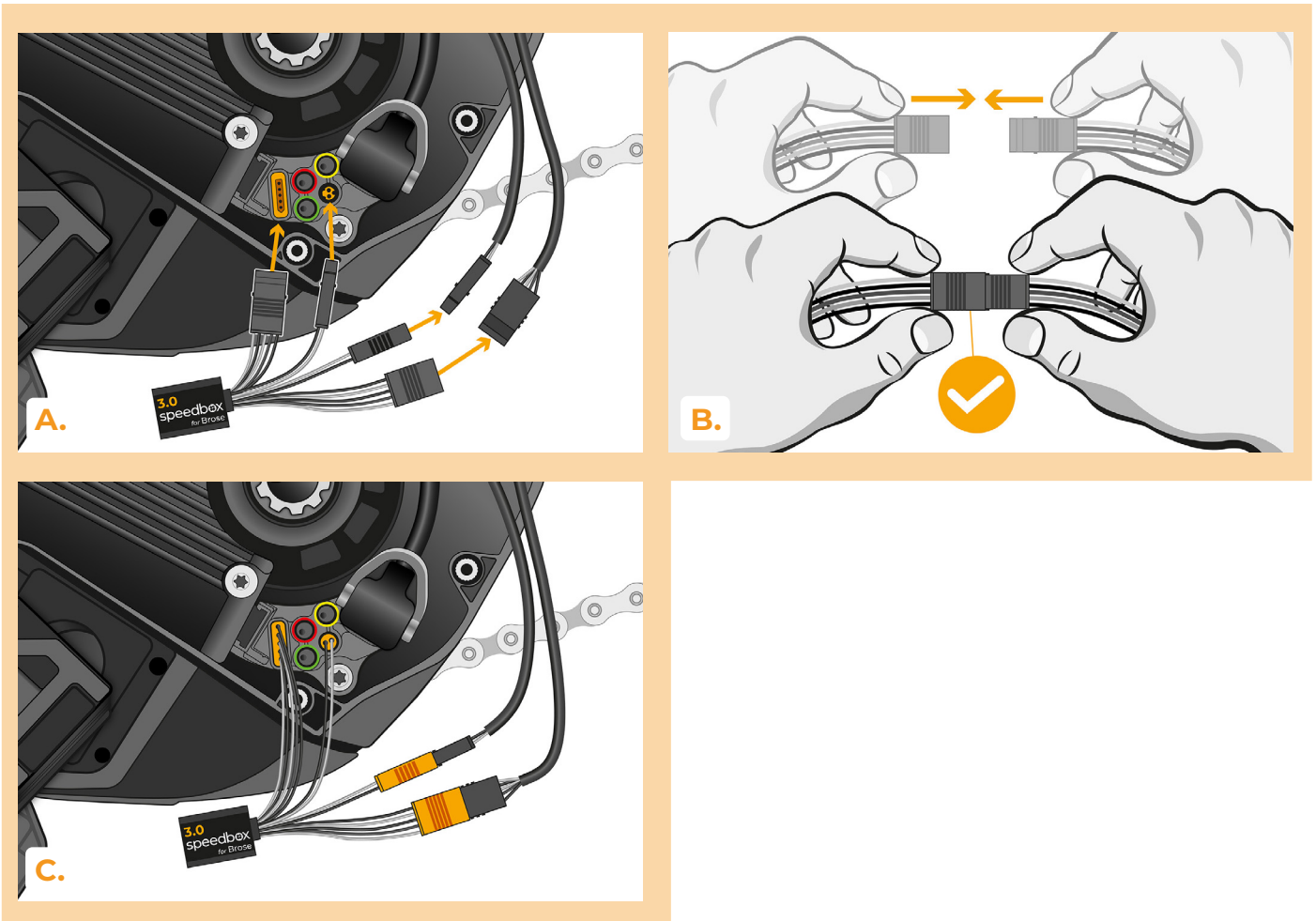
## STEP 4: Disconnecting the connectos from the motor

- A.** Using pliers, disconnect the display connector from the motor.
- B.** Disconnect the speed sensor connector in the same manner.



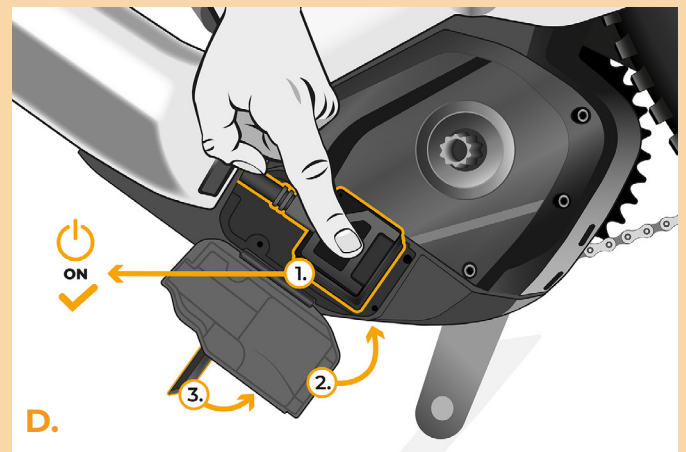
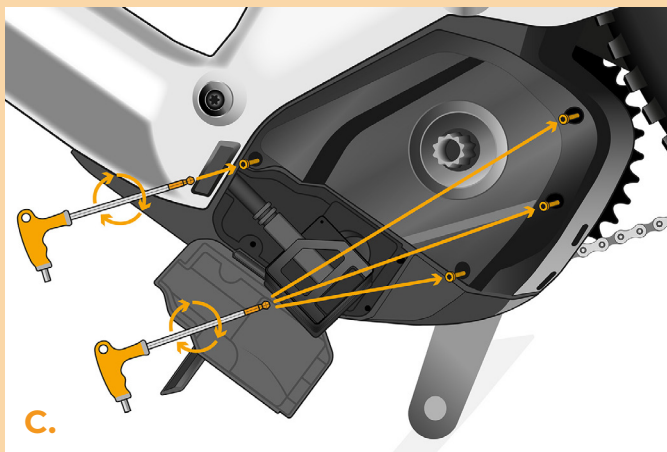
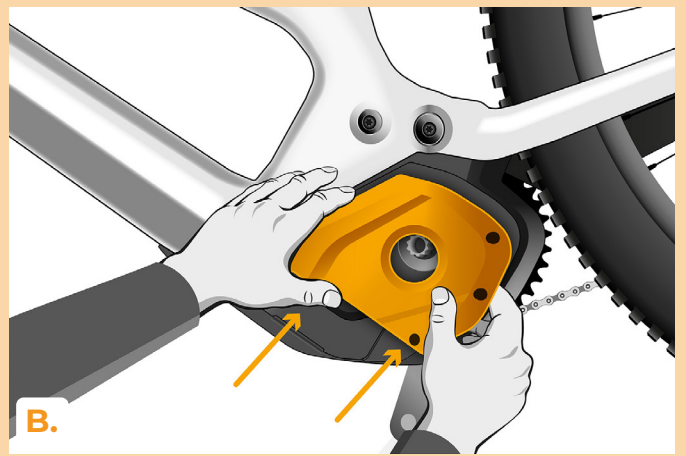
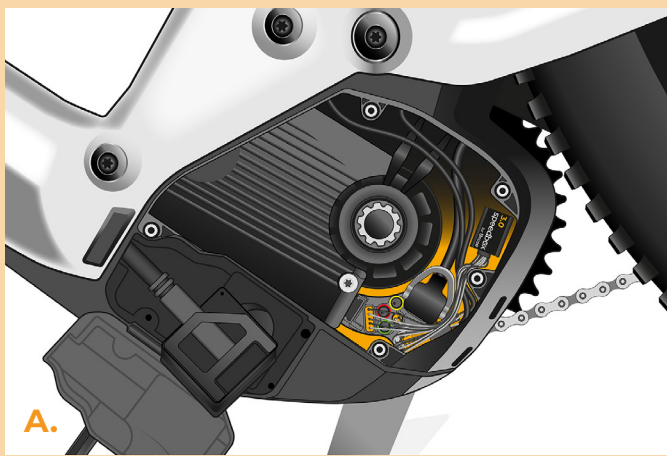
## STEP 5: SpeedBox tuning installation

- A.** Replace the original connectors with the SpeedBox connectors.
- B.** Plug the e-bike connectors, disconnected from the motor, into the SpeedBox connectors and make sure that the locks on the connectors are seated properly.
- C.** Before assembling the motor, check the correct wiring as shown in the figure.



## STEP 6: Motor cover assembly

- A.** Fit the SpeedBox and all connectors and wires leading from the motor into the free space in the motor compartment.
- B.** Place the motor cover back to its original position.
- C.** Attach the motor cover with the screws using the hex key H3.
- D.** Connect the battery charger connector.

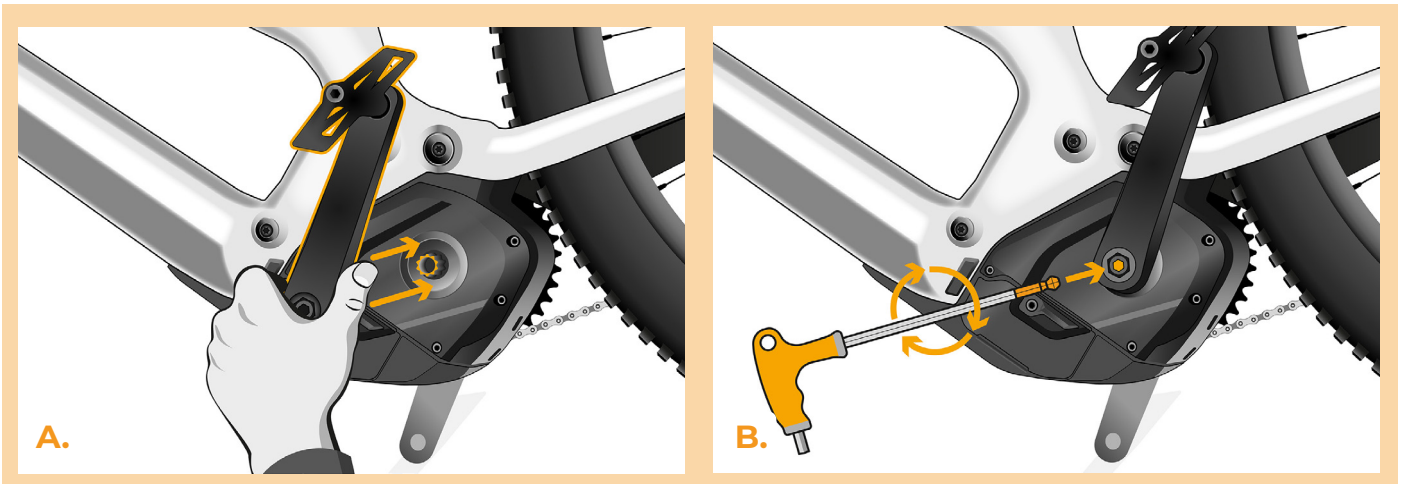




## STEP 7: Crank assembly

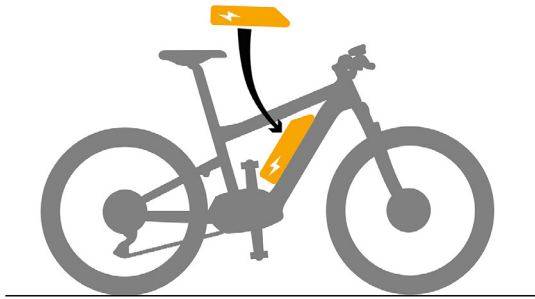
*If you have removed the crank according to Step 2, install it back.*

- A.** Put the crank arm back to the central axis of the e-bike motor.
- B.** Screw the crank bolt into the crank arm and tighten it with the hex key H8.



## STEP 8: Tuning function check

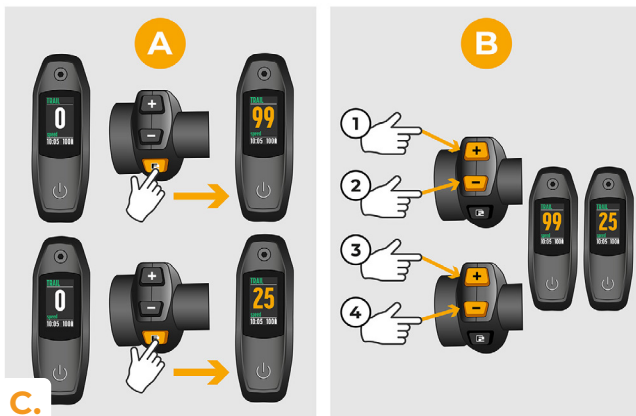
- A.** Place the battery back into the e-bike.
- B.** Turn the e-bike on.
- C.** You will activate/deactivate tuning by brief activation of the WALK function or by switching between two assistance modes twice (+--).
- D.** Spin the rear wheel and make sure the rear wheel speed is shown on the e-bike display.



**A.**



**B.**



**C.**

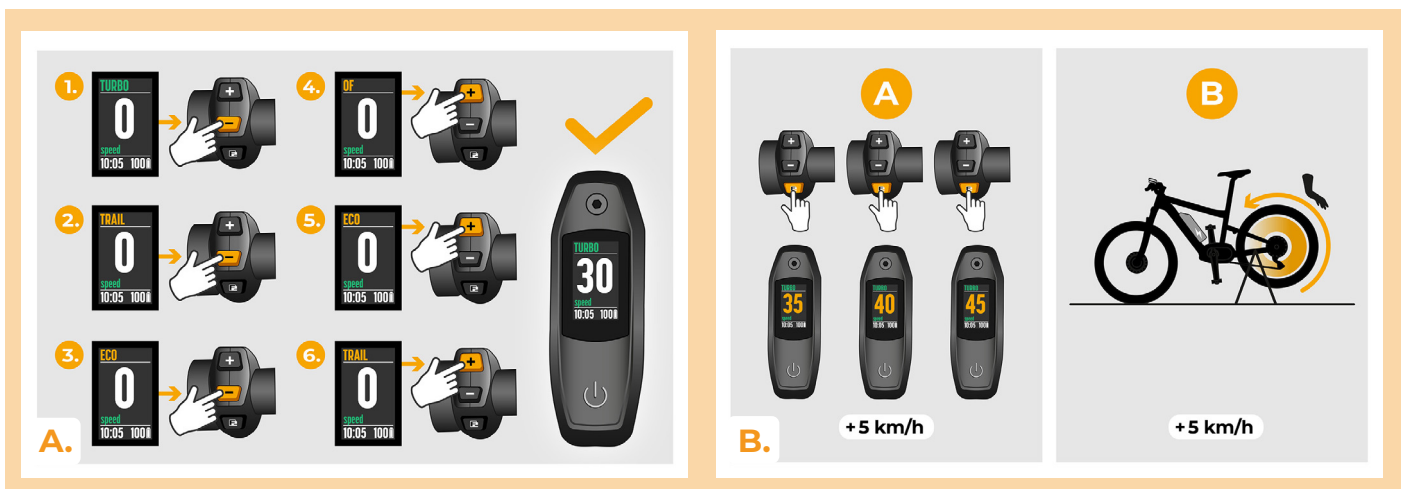


**D.**



## STEP 9: Setting the speed limit

- A.** Set TURBO mode. Switch between the assistance modes briefly in the following order TURBO > TRAIL > ECO > OFF > ECO > TRAIL > TURBO, i.e., go three levels down and three levels up. The current speed limit will be displayed.
- B.** Set the maximum speed limit by activating the WALK function briefly or by turning the rear wheel 360°. With each brief activation of the WALK function or turning of the wheel, the limit increases by 5 km/h. The last displayed limit is saved after five seconds of inactivity.



[www.speedbox-tuning.en](http://www.speedbox-tuning.en)

Ebike Electronic s.r.o.

Rybna 716/24 | 110 00 Praha 1 | Czech Republic | ID: 05553555 | VAT: CZ05553555



